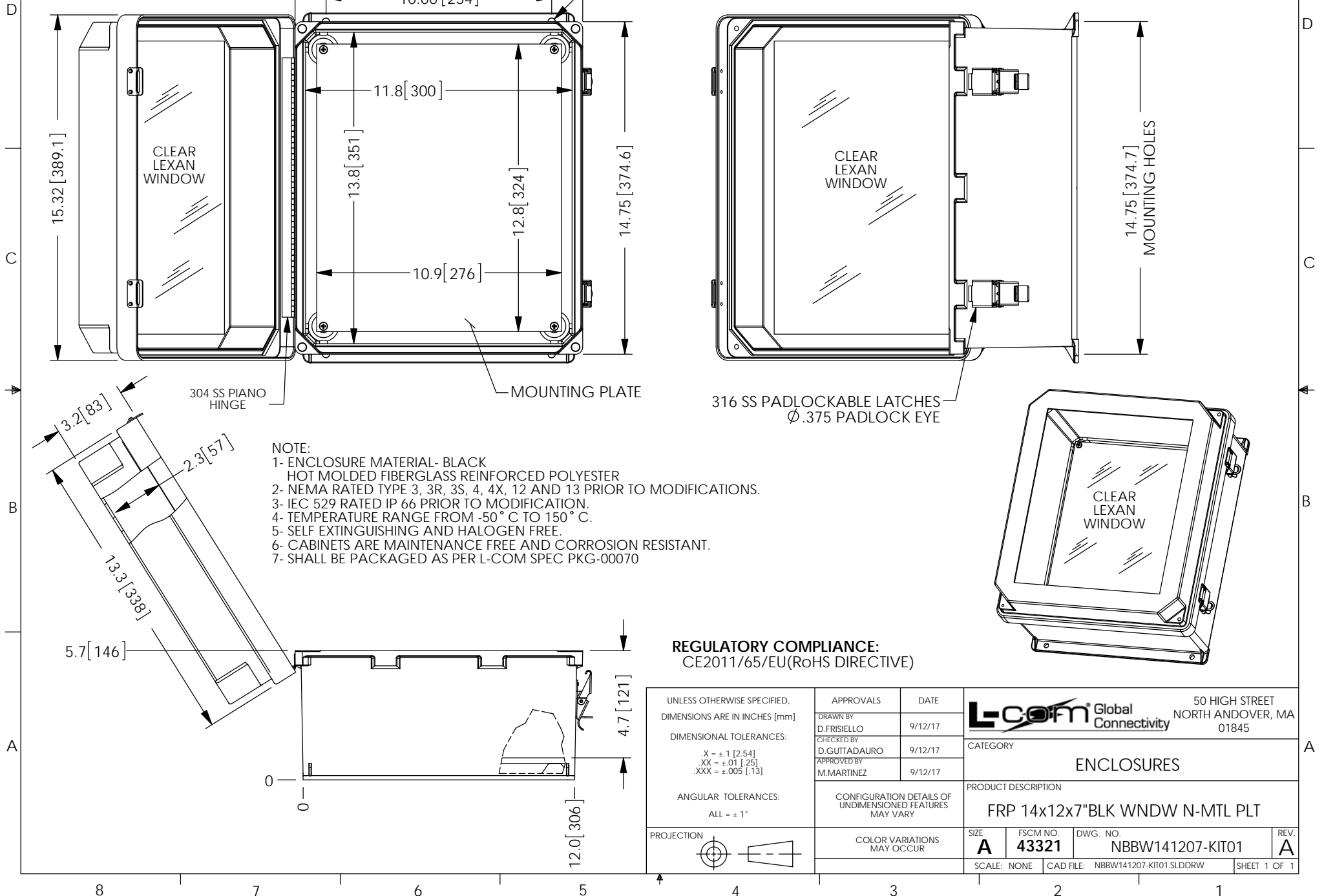



THE INFORMATION CONTAINED IN THIS DRAWING IS THE SOLE PROPERTY OF L-COM, INC. ANY REPRODUCTION IN PART OR WHOLE WITHOUT THE WRITTEN PERMISSION OF L-COM, INC. IS PROHIBITED.

REVISIONS			
REV	DESCRIPTION	DATE	APPROVED
A	INITIAL RELEASE	9/12/17	D.FRISIELLO



REGULATORY COMPLIANCE:
CE2011/65/EU(RoHS DIRECTIVE)

UNLESS OTHERWISE SPECIFIED, DIMENSIONS ARE IN INCHES [mm] DIMENSIONAL TOLERANCES: X = ±.1 [2.54] XX = ±.01 [.25] XXX = ±.005 [.13] ANGULAR TOLERANCES: ALL = ± 1°	APPROVALS		DATE			50 HIGH STREET NORTH ANDOVER, MA 01845	
	DRAWN BY D.FRISIELLO		9/12/17				
	CHECKED BY D.GUITADAURO		9/12/17		CATEGORY ENCLOSURES		
	APPROVED BY M.MARTINEZ		9/12/17				
CONFIGURATION DETAILS OF UNDIMENSIONED FEATURES MAY VARY		PRODUCT DESCRIPTION FRP 14x12x7"BLK WNDW N-MTL PLT					
PROJECTION 	COLOR VARIATIONS MAY OCCUR		SIZE A	FSCM NO. 43321	DWG. NO. NBBW141207-KIT01	REV. A	
			SCALE: NONE		CAD FILE: NBBW141207-KIT01.SLDDRW	SHEET 1 OF 1	